



SEFOPE

Direcção Nacional Emprego Exterior

Factsheet 1

Seasonal Worker Program General Information

What is the Australian Seasonal Worker Program?

The program was set up by the Timor-Leste and Australian Governments to provide Timorese with opportunities to gain new skills and save money by working for short periods in Australia's horticulture and hospitality industries. It also provides Australian employers with labour when they cannot find local workers to meet their needs.

The program is managed by the National Department of External Employment within SEFOPE. A team of SEFOPE staff at the Labour Sending Unit manage the program with support from the Timor-Leste Labour Attache team in Australia.



● Signing ceremony of the MoU

between the Government of Timor-Leste and the Government of Australia on the 1st of December 2011.

● > 1600 workers worked in Australia

the number has increased rapidly

2011

2012

2019

● 12 Timorese workers were sent to Australia

to take jobs in the hospitality sector in Broome, Western Australia.

Frequently Asked Questions

1 How do I register for the program?

SEFOPE holds registration events in each municipality. These events are announced by SEFOPE in advance. At these events workers submit their registration documents then take a series of tests. Those that pass then complete a 'profile' and go onto the work ready pool for potential selection by Australian employers. Registration is NOT open at other times.

2 What sort of skills do I need?

Workers must be fit, aged between 21-45, with reasonable English skills, excellent behavior and work ethic. More specialised skills are needed for certain jobs e.g. driving, forklift operation.

3 How long does it take to get work?

It can take between 6 months to 5 years for workers to move from the initial testing onto the work ready

pool, then to be available for employers then selected for work. Some people who take the initial tests might not be selected if they don't meet the needs of employers in Australia. If an employer indicates they would like to employ you it still may take some time for you to gather the documents, complete medical testing, police checks and other tasks.

4 What does a Health Examination involve?

All workers with contracts over 5 months must complete a Health Examination to get a Visa to go to Australia. The cost for doing a full examination is \$295 and workers must pay for this. It is mandatory for an Australian Visa, SEFOPE cannot change this. Some medical tests reveal the need for further tests including for Tuberculosis. This testing can take up to 5 months.

For any enquiries regarding **Seasonal Worker Program** please send an email or visit Direcção Nacional Emprego Exterior Australian Labour Mobility Office in Becora.

SEFOPE office in Becora

Monday - Friday

8pm-12pm : Internal work (not open to public)

2pm-5.30pm : Public enquiries

enquiries.lsu.tl@gmail.com

Response will be given within 3 working days



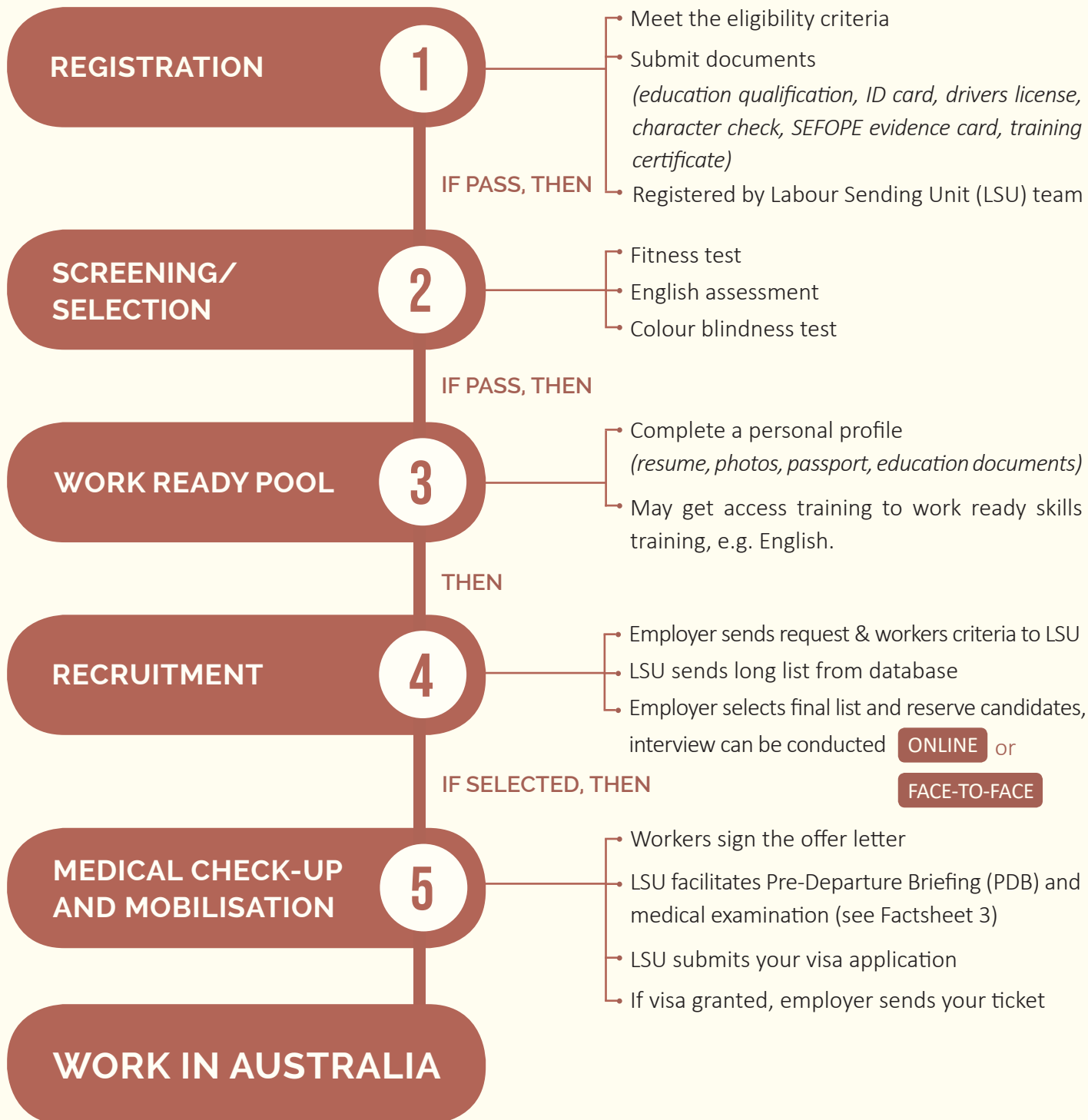
SEFOPE

Direcção Nacional Emprego Exterior

Factsheet 1

Seasonal Worker Program General Information

5 Seasonal Worker Program Stages



For any enquiries regarding Seasonal Worker Program please send an email or visit Direcção Nacional Emprego Exterior Australian Labour Mobility Office in Becora.

SEFOPE office in Becora

Monday - Friday

8pm-12pm : Internal work (not open to public)

2pm-5.30pm : Public enquiries

enquiries.lsu.tl@gmail.com

Response will be given within 3 working days